

**You might find this additional information useful...**

---

This article cites 35 articles, 18 of which you can access free at:

<http://ajpregu.physiology.org/cgi/content/full/276/3/R790#BIBL>

This article has been cited by 18 other HighWire hosted articles, the first 5 are:

**Renal interstitial adenosine is increased in angiotensin II-induced hypertensive rats**

M. Franco, R. Bautista, O. Perez-Mendez, L. Gonzalez, U. Pacheco, L. G. Sanchez-Lozada, J. Santamaria, E. Tapia, R. Monreal and F. Martinez  
*Am J Physiol Renal Physiol*, January 1, 2008; 294 (1): F84-F92.

[Abstract] [Full Text] [PDF]

**Adenosine and kidney function.**

V. Vallon, B. Muhlbauer and H. Osswald  
*Physiol Rev*, July 1, 2006; 86 (3): 901-940.

[Abstract] [Full Text] [PDF]

**Survival in Hostile Environments: Strategies of Renal Medullary Cells**

W. Neuhofer and F.-X. Beck  
*Physiology*, June 1, 2006; 21 (3): 171-180.

[Abstract] [Full Text] [PDF]

**Exaggerated response to adenosine in kidneys from high salt-fed rats: role of epoxyeicosatrienoic acids**

E. L. Liclican, J. C. McGiff, P. L. Pedraza, N. R. Ferreri, J. R. Falck and M. A. Carroll  
*Am J Physiol Renal Physiol*, August 1, 2005; 289 (2): F386-F392.

[Abstract] [Full Text] [PDF]

**Vasoconstrictor and vasodilator effects of adenosine in the kidney**

P. B. Hansen and J. Schnermann  
*Am J Physiol Renal Physiol*, October 1, 2003; 285 (4): F590-F599.

[Abstract] [Full Text] [PDF]

Medline items on this article's topics can be found at <http://highwire.stanford.edu/lists/artbytopic.dtl> on the following topics:

Physiology .. Hemodynamics  
Neuroscience .. Adenosine  
Physiology .. Blood Circulation  
Physiology .. Blood Pressure  
Physiology .. Renal Cortex  
Physiology .. Renal Medulla

Updated information and services including high-resolution figures, can be found at:

<http://ajpregu.physiology.org/cgi/content/full/276/3/R790>

Additional material and information about *American Journal of Physiology - Regulatory, Integrative and Comparative Physiology* can be found at:

<http://www.the-aps.org/publications/ajpregu>

---

This information is current as of March 20, 2008 .

# Role of renal medullary adenosine in the control of blood flow and sodium excretion

AI-PING ZOU, KASEM NITHIPATIKOM, PIN-LAN LI, AND ALLEN W. COWLEY, JR.  
*Departments of Physiology and Pharmacology and Toxicology,  
Medical College of Wisconsin, Milwaukee, Wisconsin 53226*

**Zou, Ai-Ping, Kasem Nithipatikom, Pin-Lan Li, and Allen W. Cowley, Jr.** Role of renal medullary adenosine in the control of blood flow and sodium excretion. *Am. J. Physiol.* 276 (Regulatory Integrative Comp. Physiol. 45): R790–R798, 1999.—This study determined the levels of adenosine in the renal medullary interstitium using microdialysis and fluorescence HPLC techniques and examined the role of endogenous adenosine in the control of medullary blood flow and sodium excretion by infusing the specific adenosine receptor antagonists or agonists into the renal medulla of anesthetized Sprague-Dawley rats. Renal cortical and medullary blood flows were measured using laser-Doppler flowmetry. Analysis of microdialyzed samples showed that the adenosine concentration in the renal medullary interstitial dialysate averaged  $212 \pm 5.2$  nM, which was significantly higher than  $55.6 \pm 5.3$  nM in the renal cortex ( $n = 9$ ). Renal medullary interstitial infusion of a selective  $A_1$  antagonist, 8-cyclopentyl-1,3-dipropylxanthine (DPCPX;  $300 \text{ pmol} \cdot \text{kg}^{-1} \cdot \text{min}^{-1}$ ,  $n = 8$ ), did not alter renal blood flows, but increased urine flow by 37% and sodium excretion by 42%. In contrast, renal medullary infusion of the selective  $A_2$  receptor blocker 3,7-dimethyl-1-propargylxanthine (DMPX;  $150 \text{ pmol} \cdot \text{kg}^{-1} \cdot \text{min}^{-1}$ ,  $n = 9$ ) decreased outer medullary blood flow (OMBF) by 28%, inner medullary blood flows (IMBF) by 21%, and sodium excretion by 35%. Renal medullary interstitial infusion of adenosine produced a dose-dependent increase in OMBF, IMBF, urine flow, and sodium excretion at doses from 3 to  $300 \text{ pmol} \cdot \text{kg}^{-1} \cdot \text{min}^{-1}$  ( $n = 7$ ). These effects of adenosine were markedly attenuated by the pretreatment of DMPX, but unaltered by DPCPX. Infusion of a selective  $A_3$  receptor agonist,  $N^6$ -benzyl-5'-(*N*-ethylcarboxamido)adenosine ( $300 \text{ pmol} \cdot \text{kg}^{-1} \cdot \text{min}^{-1}$ ,  $n = 6$ ) into the renal medulla had no effect on medullary blood flows or renal function. Glomerular filtration rate and arterial pressure were not changed by medullary infusion of any drugs. Our results indicate that endogenous medullary adenosine at physiological concentrations serves to dilate medullary vessels via  $A_2$  receptors, resulting in a natriuretic response that overrides the tubular  $A_1$  receptor-mediated antinatriuretic effects.

renal hemodynamics; renal medulla; laser-Doppler flowmetry

ADENOSINE PLAYS an important role in cardiovascular homeostasis (6). Studies have indicated that adenosine is produced in response to tissue hypoxia and may serve as a negative feedback regulator to dilate vessels and to increase tissue blood perfusion, thereby returning the oxygen supply-to-demand ratio toward normal (6, 34). This adenosine feedback mechanism was first demonstrated to participate in the local regulation of coronary

blood flow (5) and was extended to explain various types of active hyperemia in other tissues, including exercising skeletal muscle and the postprandial gastrointestinal circulation (14). In the kidney, however, adenosine-mediated metabolic regulation is more complex because of the marked regional heterogeneity of renal structure and function and the different effects of adenosine on pre- and postglomerular vessels (10, 21, 34). There is evidence, however, that this adenosine feedback regulatory process in the kidney may play an important role in the control of renal vascular tone and tubular transport. It has been proposed that adenosine may be produced by transporting epithelium and increase in response to metabolic demand in the kidney (8, 10, 11). Adenosine serves as a paracrine to decrease metabolic demand of the tubular cells through the contraction of cortical preglomerular arterioles, resulting in reduction of glomerular filtration rate (GFR), and to increase peritubular blood oxygen supply by dilating postglomerular vessels. These hemodynamic effects of adenosine appear to work together with its inhibitory action on tubular transport to adjust the metabolic supply and demand toward a level of transport activity appropriate for the oxygen and substrate availability of the tissue (34).

Recently, adenosine receptors have been cloned and designated  $A_1$ ,  $A_{2a}$ ,  $A_{2b}$ , and  $A_3$  receptors (25). With the use of ligand binding, autoradiography, and measurement of adenylyl cyclase activity, two classical adenosine receptors,  $A_1$  and  $A_2$ , have been shown in the renal cortex, outer medulla, and inner medulla (2, 36). These two subtypes of adenosine receptors have also been functionally localized to specific nephron segments, including glomeruli, thick ascending limb, and papillary collecting duct (2, 13). Recent studies using RT-PCR have detected the mRNA of these two subtypes of adenosine receptors in most segments along the nephron and in outer medullary descending vasa recta (15, 35). It is generally concluded that  $A_1$  and  $A_{2a}$  receptors are widely distributed throughout the nephron and renal vasculature (21). It was demonstrated that stimulation of  $A_1$  receptors produced preglomerular vasoconstriction, activation of tubuloglomerular feedback response, and consequently reduction of GFR and sodium excretion (26, 34). Moreover, tubular  $A_1$  receptor activation may increase cortical and medullary tubular sodium reabsorption (18). In contrast, activation of  $A_2$  receptors, including  $A_{2a}$  and  $A_{2b}$ , dilates pre- and postglomerular vessels and inhibits tubular sodium reabsorption (18, 34). Therefore,  $A_1$  receptors are considered antidiuretic and antinatriuretic adenosine receptors, and  $A_2$  receptors are seen as diuretic and natriuretic adenosine receptors.

The costs of publication of this article were defrayed in part by the payment of page charges. The article must therefore be hereby marked "advertisement" in accordance with 18 U.S.C. Section 1734 solely to indicate this fact.

A<sub>3</sub> receptors have been identified in different animal tissues, including rat and pig kidneys (7, 17). This novel adenosine receptor subtype is involved in the release of autoids or paracines, such as histamine, cytokines, leukotrienes, thromboxanes, and proteases, from mast cells and other interstitial cells in response to inflammatory or noninflammatory stimulations. Activation of A<sub>3</sub> receptors was reported to contribute to the development of asthma, ischemic preconditioning (17), and adenosine-mediated vasoconstriction (30). It remains to be determined whether A<sub>3</sub> receptors contribute to the control of medullary blood flow and tubular function.

The blood supply of the renal medulla is derived from the cortical efferent arterioles of the juxtamedullary glomeruli (16). Intrarenal administration of exogenous adenosine or adenosine A<sub>2</sub> receptor agonists produced a marked increase in medullary blood flow and oxygenation (1, 10). However, the physiological role of endogenous medullary adenosine in the control of medullary circulation remains unknown. It is well known that there is a relatively hypoxic milieu in the outer medulla due to active transport of medullary thick ascending limb of Henle (TALH) and limited oxygen supply resulting from shunting of O<sub>2</sub> in the outer medulla. On the presumption that adenosine feedback mechanism also occurs in the renal medulla, adenosine level in this region should be higher relative to the renal cortex and it may play an essential role in the control of medullary blood flow. Moreover, studies have indicated that medullary blood flow and renal interstitial hydrostatic pressure participate in the control of sodium and water excretion. Increases in medullary blood flow inhibit tubular transport and result in diuresis and natriuresis (9). The extent to which endogenous medullary adenosine contributes to the control of renal sodium and water excretion through its medullary hemodynamic effect is unknown.

The present studies were designed to determine and compare medullary and cortical interstitial adenosine concentrations using microdialysis and fluorescence HPLC techniques and to examine the role of endogenous medullary adenosine in the control of medullary blood flow and renal sodium and water excretion. A renal interstitial catheter was implanted to deliver adenosine and its receptor agonists or antagonists into the renal medullary interstitial space, and changes in regional blood flows were determined by laser-Doppler flowmetry.

## MATERIALS AND METHODS

### *Surgical Preparation*

Experiments were performed on male Sprague-Dawley rats weighing between 250 and 300 g. The rats were fed a normal salt diet (1% NaCl). Before experiments, rats were fasted overnight but allowed free access to water. They were anesthetized with ketamine (30 mg/kg body wt im) and Inactin (50 mg/kg body wt ip) and placed on a thermostatically controlled warming table to maintain body temperature at 37°C. After tracheotomy, cannulas were placed in the right femoral vein and artery for intravenous infusions and measurement of arterial pressure. An abdominal incision was

made, and the left kidney was placed in a stainless steel cup for implantation of optical fibers to measure cortical and medullary blood flows or for implantation of microdialysis probes to dialyze adenosine from the renal interstitium. An interstitial catheter was implanted into the renal medulla for renal medullary interstitial infusion of drugs. After implantation, a 0.9% solution of sodium chloride was continuously infused at a rate of 0.5 ml/h to maintain the patency of the catheter (19). Ureters were cannulated for collection of urine. The animals received an intravenous infusion of 2% bovine serum albumin in a 0.9% sodium chloride solution, at a rate of 3 ml/h throughout the experiment to replace fluid losses and maintain a stable hematocrit of  $\sim 43 \pm 3\%$ .

### *Experimental Protocols*

*Protocol 1: Microdialysis analysis of adenosine concentration in the renal cortex and medulla.* In vivo microdialysis study was performed according to the technique described by Baranowski and Westenfelder (3). Briefly, the rats ( $n = 9$ ) were anesthetized and surgically prepared as described above. The left kidney was exposed and immobilized by placing it dorsal side up in a kidney cup. A microdialysis probe (Bioanalytical Systems, West Lafayette, IN) with 0.5-mm tip diameter, 1-mm dialysis length, and a 20-kDa transmembrane diffusion cutoff was inserted into the renal cortex (1.5 mm in depth) horizontally from kidney pole and another was inserted into the renal medulla (5 mm in depth) from dorsal surface. The cortical probe was perfused at 2  $\mu$ l/min with PBS (in mM: 80 NaCl, 40.5 Na<sub>2</sub>HPO<sub>4</sub>, and 9.5 NaH<sub>2</sub>PO<sub>4</sub>, pH 7.4 and osmolarity 300 mosM), and the medullary probe was perfused with PBS containing (in mM) 205 NaCl, 40.5 Na<sub>2</sub>HPO<sub>4</sub>, and 9.5 NaH<sub>2</sub>PO<sub>4</sub> (pH 7.4 and osmolarity 550 mosM). The dialysate was collected for 30 min and then either reacted with fluorescence dye (chloroacetaldehyde) immediately or stored at  $-80^\circ\text{C}$  until HPLC analysis.

*Protocol 2: Effects of renal medullary interstitial infusion of A<sub>1</sub> and A<sub>2</sub> receptor antagonists on medullary blood flow and renal function.* These experiments were performed in 22 rats to evaluate the role of endogenous adenosine in the control of renal medullary blood flow. The rats were anesthetized and surgically prepared as described above. The left kidney was exposed and immobilized by placing it dorsal side up in a kidney cup. Laser-Doppler flowmeters (model Pf3, PERIMED KB) were used to simultaneously determine the changes in three regions of the left kidney with one optical fiber (diameter of 500  $\mu$ m) implanted in the renal cortex, another in the outer medulla, and a third in the inner medulla as described previously (19). The implanted fibers were optically connected to an external probe specifically designed for such applications (model Pf318A, PERIMED KB) using fused silica matching liquid (#50350, Cargille Laboratories, Cedar Grove, NJ) to minimize loss of light at the connection. The laser-Doppler signal, which is the product of the number of moving particles and their velocity, is thereby used as an index of changes of blood flow in the different portions of the kidney (19). After surgery and a 60-min equilibration period, continuous measurements of mean arterial pressure (MAP) and cortical, outer, and inner medullary blood flows were obtained throughout the experiment. Saline was infused into the renal medullary interstitium for two 20-min control periods. At the end of the second control period, either a selective A<sub>1</sub> antagonist, 8-cyclopentyl-1,3-dipropylxanthine (DPCPX) ( $n = 8$ , 300 pmol  $\cdot$  kg<sup>-1</sup>  $\cdot$  min<sup>-1</sup>), or A<sub>2</sub> antagonist, 3,7-dimethyl-1-propargylxanthine (DMPX) ( $n = 9$ , 150 pmol  $\cdot$  kg<sup>-1</sup>  $\cdot$  min<sup>-1</sup>), was infused into the renal medullary interstitium for 30 min. Doses of DPCPX and DMPX for renal medullary interstitial infusion were chosen on the basis of those used in previous in

vivo studies, at which DPCPX and DMPX specifically blocked  $A_1$  and  $A_2$  receptors, respectively (23, 27).

To determine whether endogenous medullary adenosine contributes to the control of sodium and water excretion, we also examined the effects of  $A_1$  and  $A_2$  receptor antagonists on renal function. Seventeen rats were surgically prepared as described above. The animal received an intravenous infusion of 2% bovine serum albumin in 0.9% sodium chloride, and [ $^3$ H]inulin (1  $\mu$ Ci/ml) was added to the infusion solution for measurement of GFR. After surgery and a 1-h equilibration period, urine flow, sodium excretion, and GFR were measured in both left and right kidneys during a 30-min control period. DPCPX was then infused through the renal interstitial catheter into the renal medulla at a rate of 0.5 ml/h to deliver a dose of 300 pmol  $\cdot$  kg $^{-1}$   $\cdot$  min $^{-1}$  ( $n = 6$ ), or DMPX was infused at a dose of 150 pmol  $\cdot$  kg $^{-1}$   $\cdot$  min $^{-1}$  ( $n = 11$ ). Fifteen minutes after drug infusions were started, urine and plasma samples were again collected over a 30-min period from the left and right kidneys.

**Protocol 3: Effects of renal medullary interstitial infusion of adenosine on medullary blood flow and renal function.** Nineteen rats were anesthetized and surgically prepared as described above to determine the effects of renal medullary interstitial infusion of adenosine on medullary blood flow. The left kidney was exposed and immobilized by placing it dorsal side up in a kidney cup. After surgery and a 60-min equilibration period, continuous measurements of MAP and laser-Doppler measurements of cortical, outer, and inner medullary blood flow were obtained throughout the experiment as described in *protocol 2*. Saline was infused into the renal medullary interstitium for two 20-min control periods. At the end of the second control period, adenosine was infused into the renal medullary interstitium for 20 min at doses of 3, 30, and 300 pmol  $\cdot$  kg $^{-1}$   $\cdot$  min $^{-1}$  ( $n = 7$ ). Finally, the interstitial infusion was switched back to saline for 30 min. To define the receptor type responding to exogenous adenosine on medullary vessels, either DPCPX ( $n = 6$ , 300 pmol  $\cdot$  kg $^{-1}$   $\cdot$  min $^{-1}$ ) or DMPX ( $n = 6$ , 150 pmol  $\cdot$  kg $^{-1}$   $\cdot$  min $^{-1}$ ) was infused into the renal medullary interstitial space before and during adenosine infusion. Simultaneously, plasma and urine samples from the left and right kidneys were collected to measure sodium and water excretion during control and experimental periods as described above. In time control experiments ( $n = 6$ ), saline vehicle alone was infused into the renal medullary interstitium during control and experimental periods.

**Protocol 4: Effects of renal medullary interstitial infusion of  $A_3$  receptor agonist on medullary blood flow and renal function.** Because a specific  $A_3$  receptor antagonist is not yet available, we examined the effect of a selective  $A_3$  receptor agonist,  $N^6$ -benzyl-5'-( $N$ -ethylcarbonxamido)adenosine ( $N^6$ -benzyl-NECA) on renal medullary blood flow. Six rats were anesthetized and surgically prepared as described above for continuous measurements of MAP and laser-Doppler measurements of cortical, outer, and inner medullary blood flows. Saline was infused into the renal medullary interstitium for two 20-min control periods. At the end of the second control period,  $N^6$ -benzyl-NECA was infused into the renal medullary interstitium for 40 min at a dose of 300 pmol  $\cdot$  kg $^{-1}$   $\cdot$  min $^{-1}$  ( $n = 6$ ) followed by a 30-min interstitial infusion of saline. Plasma and urine samples from the left and right kidneys were collected to measure sodium and water excretion during control and experimental periods as described above. The dose of  $N^6$ -benzyl-NECA was chosen on the basis of its  $A_3$  affinity analysis ( $K_i = 6.1$  nM) (31) and previous in vivo study (28).

#### HPLC Assay of Adenosine

HPLC assay of adenosine was performed as we described previously (24). The cortical and medullary dialysates (50  $\mu$ l) were transferred into autosample vials and mixed with 4  $\mu$ l of 1 M acetate buffer (pH 7.5) and 2  $\mu$ l of 50% chloroacetaldehyde. The vials were capped and incubated at 60°C for 4 h. Reaction mixtures (5  $\mu$ l) were injected and chromatographed on a 1090 Series II liquid chromatograph (Hewlett-Packard, Palo Alto, CA) using an autosampler and a column-switching valve. A shielded hydrophobic phase column, HiSep, 250  $\times$  2.1 mm (Supelco, Bellefonte, PA) and an ODS-S C18, 250  $\times$  2.0 mm (Metachem Technologies, Torrance, CA) with an isocratic mobile phase of 10% acetonitrile and 90% of 0.1 M sodium acetate and 0.002 M 1-octanesulfonic acid were used for separation. The flow rate was 0.2 ml/min. The eluate from the HiSep column was bypassed to waste 6 s after injection. After 5 min, the effluent was switched back to the C18 column for further separation and passed through the detector. The fluorescence was detected by an FS 970 LC Fluorometer (Kratos Analytical Instruments, Ramsey, NJ) with an excitation wavelength of 274 nm and a 370-nm loop-pass filter for emission. The chromatograph was recorded, and the peaks were integrated on a 3392 integrator (Hewlett-Packard). The run time was 20 min with 5 min post run (24). To determine derivatization reaction recovery, a known concentration of adenosine was reacted with chloroacetaldehyde as described above, and 1,  $N^6$ -ethenoadenosine standard was serially diluted to construct the standard curve.

#### Analytical Techniques

[ $^3$ H]inulin concentrations of urine and plasma samples were determined using a liquid-scintillation counter (model 2450, Packard Instrument, Downers Grove, IL). Urine flow rate was determined gravimetrically. Sodium and potassium concentrations of urine and plasma samples were measured using a flame photometer. GFR was calculated as the product of urine flow and the urine-to-plasma inulin concentration ratio. Urinary excretion data, renal blood flow, and GFR were all factored per gram kidney weight.

#### Statistics

Data are presented as means  $\pm$  SE. The significance of differences within and between groups was evaluated using an ANOVA for repeated measures followed by a Duncan's multiple-range test and using a paired  $t$ -test.  $P < 0.05$  was considered statistically significant.

## RESULTS

#### Protocol 1: Renal Interstitial Concentration of Adenosine in the Renal Medulla and Cortex

A typical reverse phase-HPLC chromatogram depicting the profile of the fluorescent derivatives of adenosine is presented in Fig. 1A. Adenosine (1  $\mu$ M) was reacted with chloroacetaldehyde to form a fluorescence product, 1,  $N^6$ -ethenoadenosine. This fluorescence product coeluted with synthetic 1,  $N^6$ -ethenoadenosine standard with a retention time of 9 min. When the sample containing adenosine was incubated with adenosine deaminase (1 U), the 9-min peak disappeared (Fig. 1B). Adenosine concentrations of renal cortical and medullary dialysates are presented in Fig. 1C. Adenosine concentration in renal medullary interstitial dialysate

averaged  $212 \pm 5.2$  nM, which was significantly higher than  $55.6 \pm 5.3$  nM in cortical dialysate.

*Protocol 2: Effects of Renal Medullary Interstitial Infusion of A<sub>1</sub> and A<sub>2</sub> Receptor Antagonists on Medullary Blood Flow and Renal Function*

The effects of renal medullary interstitial infusion of DPCPX and DMPX on cortical and medullary blood flows are presented in Fig. 2. In control periods, the laser-Doppler signals from the fibers implanted in the renal cortex and outer and inner medulla averaged  $1.56 \pm 0.2$ ,  $0.80 \pm 0.12$ , and  $0.51 \pm 0.1$  V, respectively. The cortical flow signal was not altered from control values during the renal medullary interstitial infusion of either the A<sub>1</sub> or the A<sub>2</sub> antagonist. Renal medullary interstitial infusion of the A<sub>2</sub> antagonist DMPX significantly decreased outer and inner medullary flow signals by 28.5 and 27.5% compared with control flow signal, respectively. In contrast, infusion of the A<sub>1</sub> antagonist DPCPX had no effect on flow signals in either of the medullary regions. MAP was not altered from the control level ( $115 \pm 3$  mmHg) during renal medullary interstitial infusion of the A<sub>1</sub> and A<sub>2</sub> antagonists.

The effects of renal medullary interstitial infusion of the A<sub>1</sub> and A<sub>2</sub> antagonists on renal function are summarized in Table 1. GFR, urine flow rate, and sodium and potassium excretion all were similar in the infused and contralateral kidney during the control period, indicating that implantation of an infusion catheter in the renal medulla and renal medullary interstitial infusion of saline had no significant effect on renal tubular or vascular function. Renal medullary interstitial infu-

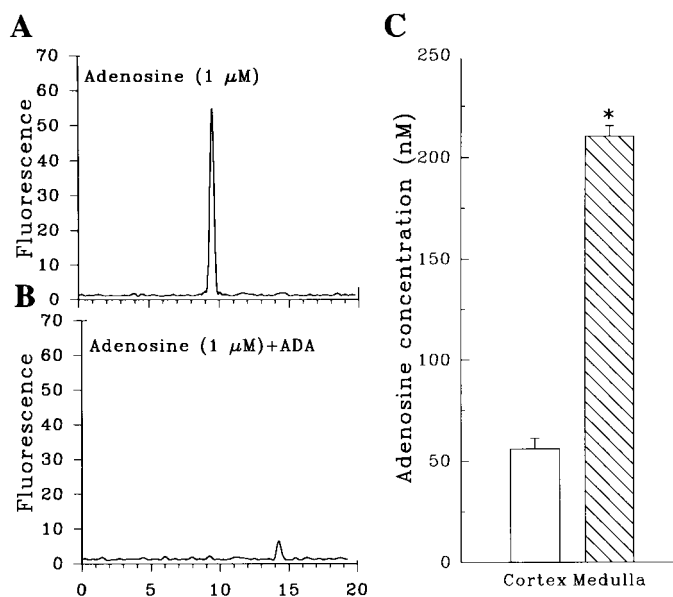


Fig. 1. Adenosine concentrations in renal cortical and medullary interstitial dialysates. *A*: representative HPLC chromatogram of adenosine fluorescent derivatives. *B*: HPLC chromatogram of adenosine fluorescent derivatives after  $1 \mu\text{M}$  adenosine standard solution was incubated with 1 IU adenosine deaminase (ADA). *C*: summary of adenosine concentration in cortical and medullary interstitial dialysates ( $n = 9$ ). \*Significant difference from cortical concentration.

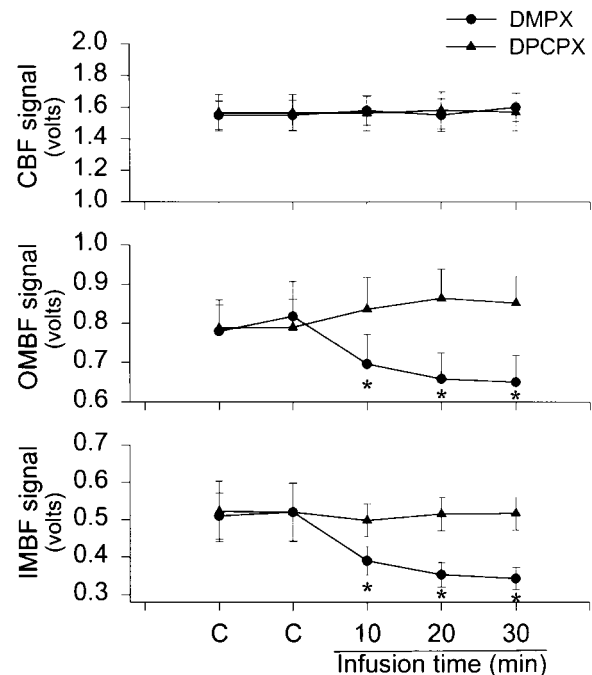


Fig. 2. Effect of renal medullary interstitial infusion of 8-cyclopentyl-1,3-dipropylxanthine (DPCPX), A<sub>1</sub> receptor antagonist ( $n = 9$ ), and 3,7-dimethyl-1-propargylxanthine (DMPX), A<sub>2</sub> receptor antagonist ( $n = 8$ ) on cortical and medullary blood flows. C, control period; CBF, cortical blood flow; OMBF, outer medullary blood flow; IMBF, inner medullary blood flow. \*Significant difference from control periods.

sion of the A<sub>1</sub> antagonist DPCPX produced an increase in urine flow rate and sodium excretion of 28.3 and 29.7%, respectively, in the absence of changes in GFR. Urine flow rate, sodium excretion, and GFR in the contralateral control kidney were not significantly altered during these experiments, indicating that medullary interstitial infusion of DPCPX was localized in the infused kidney. In contrast, renal medullary interstitial infusion of the A<sub>2</sub> receptor antagonist DMPX reduced urine flow rate and sodium excretion by 24.3 and 25.7%, respectively, without changes in GFR. In the contralateral control kidney, urine flow rate, sodium excretion, and GFR were not significantly altered during these experiments. MAP remained unchanged throughout all of the above studies.

*Protocol 3: Effects of Renal Medullary Interstitial Infusion of Adenosine on Medullary Blood Flow and Renal Function*

Renal medullary interstitial infusion of adenosine produced a concentration-dependent increase in medullary blood flows. As shown in Fig. 3, adenosine infusion at a dose of  $300 \text{ pmol} \cdot \text{kg}^{-1} \cdot \text{min}^{-1}$  had no effect on cortical flow signal but significantly increased outer and inner medullary flow signals by 30 and 25%, respectively. Both outer and inner medullary blood flows returned to levels not significantly different from control during a 20-min postcontrol period. Vehicle infusion had no effect on cortical and medullary blood flows.

Table 1. Effects of renal interstitial infusion of  $A_1$  and  $A_2$  receptor antagonists on renal function

|                                                                        | Infused Kidney |              | Contralateral Kidney |             |
|------------------------------------------------------------------------|----------------|--------------|----------------------|-------------|
|                                                                        | Control        | Antagonist   | Control              | Antagonist  |
| <i>A<sub>1</sub> antagonist DPCPX (300 pmol/kg/min, n = 6)</i>         |                |              |                      |             |
| GFR, ml·min <sup>-1</sup> ·g kidney wt <sup>-1</sup>                   | 0.88 ± 0.13    | 0.90 ± 0.04  | 0.81 ± 0.01          | 0.74 ± 0.06 |
| Urine flow rate, μl·min <sup>-1</sup> ·g kidney wt <sup>-1</sup>       | 11.6 ± 1.98    | 19.3 ± 3.21* | 9.1 ± 1.50           | 11.8 ± 3.04 |
| Sodium excretion, μmol·min <sup>-1</sup> ·g kidney wt <sup>-1</sup>    | 1.96 ± 0.43    | 3.15 ± 0.60* | 1.59 ± 0.31          | 1.99 ± 0.39 |
| Potassium excretion, μmol·min <sup>-1</sup> ·g kidney wt <sup>-1</sup> | 0.95 ± 0.12    | 1.24 ± 0.13  | 0.91 ± 0.06          | 1.06 ± 0.16 |
| <i>A<sub>2</sub> antagonist DMPX (150 pmol/kg/min, n = 11)</i>         |                |              |                      |             |
| GFR, ml·min <sup>-1</sup> ·g kidney wt <sup>-1</sup>                   | 0.83 ± 0.09    | 0.91 ± 0.13  | 0.74 ± 0.10          | 0.86 ± 0.10 |
| Urine flow rate, μl·min <sup>-1</sup> ·g kidney wt <sup>-1</sup>       | 12.0 ± 1.94    | 8.79 ± 1.92* | 10.7 ± 2.19          | 10.8 ± 3.27 |
| Sodium excretion, μmol·min <sup>-1</sup> ·g kidney wt <sup>-1</sup>    | 2.24 ± 0.43    | 1.35 ± 0.21* | 2.16 ± 0.67          | 2.04 ± 0.46 |
| Potassium excretion, μmol·min <sup>-1</sup> ·g kidney wt <sup>-1</sup> | 1.11 ± 0.19    | 0.90 ± 0.12  | 1.16 ± 0.38          | 1.02 ± 0.24 |

Values are means ± SE. DPCPX, 8-cyclopentyl-1,3-dipropylxanthine; DMPX, 3,7-dimethyl-1-propargylxanthine; GFR, glomerular filtration rate. \* $P < 0.05$  indicates significant difference from control value.

Figure 4 presents the effects of renal medullary interstitial infusion of adenosine on sodium and water excretion. A concentration-dependent increase in urine flow rate and sodium excretion was observed during renal medullary interstitial infusion of adenosine. Infusion of adenosine even at the highest doses studied (300 pmol·kg<sup>-1</sup>·min<sup>-1</sup>) did not alter sodium and water excretion in the contralateral kidney. During the post-control period, urine flow rate and sodium excretion returned to control levels.

The effects of  $A_1$  and  $A_2$  receptor blockade on adenosine-induced changes in renal regional blood flows and sodium excretion are depicted in Fig. 5. Renal medullary interstitial infusion of adenosine at a dose of 300 pmol·kg<sup>-1</sup>·min<sup>-1</sup> increased outer medullary flow signal by 0.23 V (29%) and inner medullary flow signal by 0.13 V (25%) and had no effect on the cortical flow signal. Adenosine infusion also significantly increased urine flow rate and sodium excretion. Blockade of  $A_1$  receptor by DPCPX had no effect on baseline renal blood flows, but increased water excretion from 12.8 ± 1.9 to 21.3 ± 2.8 μl·min<sup>-1</sup>·g kidney wt<sup>-1</sup> and sodium excretion from 1.43 ± 0.28 to 2.73 ± 0.36 μmol·min<sup>-1</sup>·g kidney wt<sup>-1</sup>. However, DPCPX did not alter adenosine-induced increase in outer and inner medullary blood flows and in sodium and water excretion. In contrast,

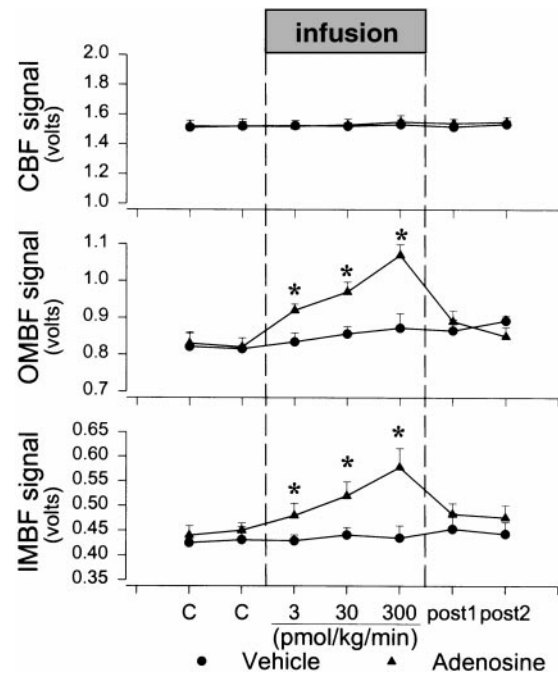


Fig. 3. Effect of renal medullary interstitial infusion of adenosine on cortical and medullary blood flows ( $n = 7$ ). Post, postcontrol period. \*Significant difference from control periods.

blockade of  $A_2$  receptor by DMPX not only decreased baseline medullary blood flows (outer from 0.82 ± 0.09 to 0.65 ± 0.07 V and inner from 0.45 ± 0.04 to 0.34 ± 0.03 V) but also abolished the increase in medullary blood flows during medullary interstitial infusion of adenosine. DMPX also significantly attenuated the adenosine-induced increase in water and sodium excretion. MAP remained unchanged throughout all of the above studies.

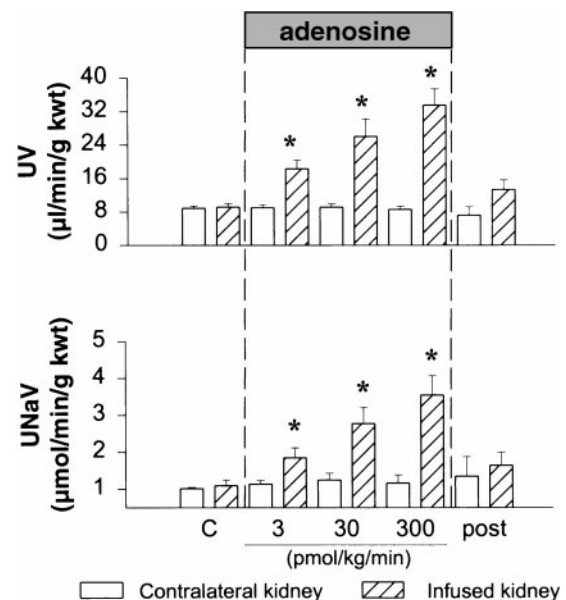


Fig. 4. Effect of renal medullary interstitial infusion of adenosine on sodium (UNaV) and water (UV) excretion ( $n = 7$ ). \*Significant difference from control periods.

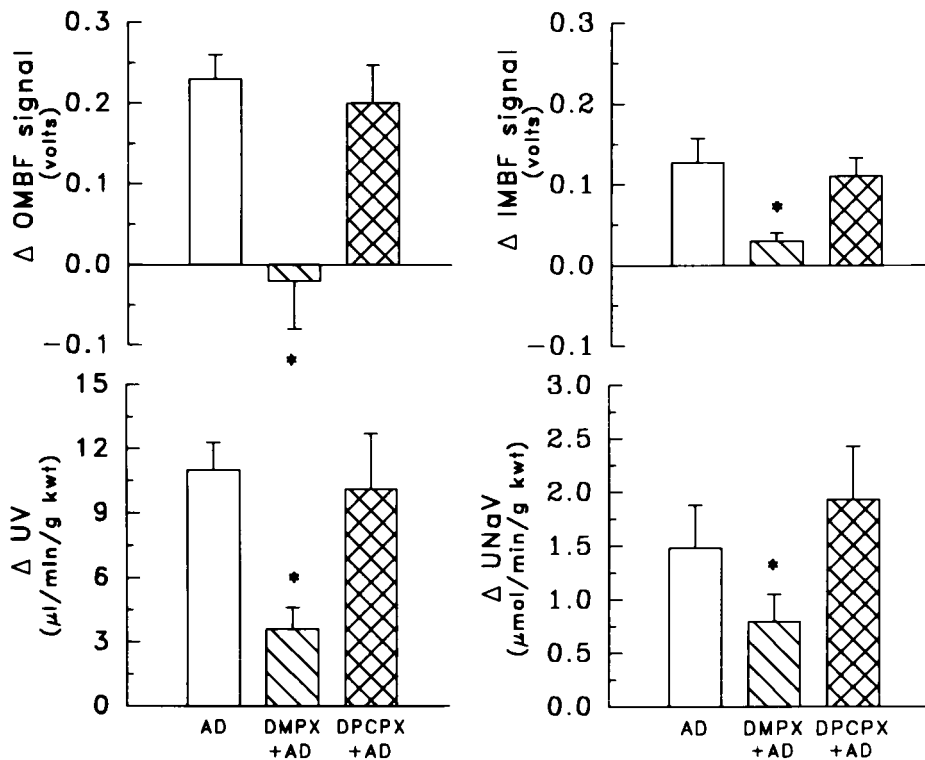


Fig. 5. Effect of DPCPX,  $A_1$  receptor antagonist ( $n = 6$ ), and DMPX,  $A_2$  receptor antagonist ( $n = 6$ ), on adenosine-induced alterations of medullary blood flows and renal function. AD, adenosine. \*Significant difference from values obtained when adenosine alone was infused into the renal medullary interstitium.

#### Protocol 4: Effects of Renal Medullary Interstitial Infusion of $A_3$ Receptor Agonist on Medullary Blood Flow and Renal Function

$A_3$  receptor agonist  $N^6$ -benzyl-NECA produced significant decrease in MAP when infused intravenously at a dose of  $300 \text{ pmol} \cdot \text{kg}^{-1} \cdot \text{min}^{-1}$  (data not shown). Renal medullary interstitial infusion of  $N^6$ -benzyl-NECA at the same dose had no effect on cortical and medullary flow signals, renal function, or MAP (Table 2).

#### DISCUSSION

Recent studies have indicated that the effects of adenosine on renal function depend on its concentration in the extracellular space (2, 26). In the present studies, we evaluated adenosine concentrations in renal medullary interstitial dialysate by microdialysis

Table 2. Effects of renal medullary interstitial infusion of  $N^6$ -benzyl-NECA on mean arterial pressure, regional renal blood flow and sodium and water excretion

|                                                                                       | Control         | $N^6$ -Benzyl-NECA |
|---------------------------------------------------------------------------------------|-----------------|--------------------|
| Mean arterial pressure, mmHg                                                          | $107 \pm 2.60$  | $109 \pm 4.26$     |
| Cortical flow signal, V                                                               | $1.58 \pm 0.13$ | $1.67 \pm 0.15$    |
| Outer medullary flow signal, V                                                        | $0.67 \pm 0.09$ | $0.65 \pm 0.10$    |
| Urine flow rate, $\mu\text{l} \cdot \text{min}^{-1} \cdot \text{g kidney wt}^{-1}$    | $10.1 \pm 2.56$ | $10.1 \pm 1.85$    |
| Sodium excretion, $\mu\text{mol} \cdot \text{min}^{-1} \cdot \text{g kidney wt}^{-1}$ | $2.39 \pm 0.31$ | $2.30 \pm 0.36$    |

Values are means  $\pm$  SE ( $n = 6$ ).  $N^6$ -benzyl-NECA,  $N^6$ -benzyl-5'-( $N$ -ethylcarboxamido)adenosine.

and fluorescence HPLC analysis. We have found that adenosine concentrations in interstitial dialysate were significantly higher in the renal medulla than in the cortex. Our results are consistent with those by Siragy and Linden (33), who reported that adenosine concentration in renal medullary dialysate from rats on normal salt diet (0.28% NaCl) was  $157 \pm 6 \text{ nM}$ , which is significantly higher than  $63 \pm 6 \text{ nM}$  in renal cortical dialysate. However, cortical adenosine concentration detected in the present study is much lower compared with the value ( $199 \pm 53 \text{ nM}$ ) reported by Baranowski and Westenfelder (3). The reason for this discrepancy may be due to the different length of dialysis tubing in our probes (1 mm in length) from theirs (2 mm). The probe with a long dialysis tubing may dialyze adenosine from the deeper cortical area close to renal medulla if inserted from the dorsal surface as carried out by Baranowski and Westenfelder (3). For dialysis of cortical adenosine, we inserted the probe from the kidney pole into the renal cortex  $\sim 1.5 \text{ mm}$  from the outer renal surface, which was similar to the method used by Siragy and Linden (33). Therefore, cortical adenosine concentration detected in the present study represents a concentration in the outer renal cortex.

Although the present study did not examine the mechanism leading to high concentration of renal medullary interstitial adenosine, a high metabolic activity and limited oxygen supply in the renal outer medulla may increase the production of adenosine in this region. Recent studies have demonstrated that the medullary TALH releases adenosine in response to hypoxia (11). Under control conditions,  $\text{PO}_2$  in the renal medulla has been found to be  $< 20 \text{ mmHg}$  (10, 11, 20). Therefore, a low intracellular  $\text{PO}_2$  and high transport

activity in the medullary TALH may result in enhanced production and release of adenosine in this kidney region (8, 11).

The role of adenosine in the control of the medullary oxygenation and the protection of the cells of medullary TALH from hypoxic damage has been extensively examined (11, 12). In the isolated perfused kidney, addition of adenosine deaminase or an adenosine efflux inhibitor 6-nitrobenzylthionosine to the perfusate resulted in exaggerated hypoxic damage to the cells of medullary thick ascending limb (12). This suggests that endogenous interstitial adenosine may play an important role in protecting medullary thick ascending limb from hypoxic injury. In the same preparation, an adenosine analog, *R*(-)-phenylisopropyladenosine, markedly reduced hypoxic injury to these cells when added to the perfusate (12). The protecting effect of adenosine has been proposed to be associated with the medullary oxygenation because renal interstitial infusion of adenosine significantly increased medullary  $P_{O_2}$  (10) and medullary blood flow (1), indicating that increase in medullary adenosine is of substantial importance in protecting medullary tubular cells from hypoxic injury through an increase in medullary blood flow and medullary oxygen supply.

Despite these observations, there has been no direct evidence suggesting that endogenously produced adenosine in the renal medulla participates in the regulation of medullary blood flow and hence medullary oxygenation under physiological conditions. In the present studies, we examined the role of endogenous medullary adenosine in the control of medullary blood flow by infusing specific adenosine receptor antagonists into the renal medullary interstitial space while measuring changes in blood flow to this region. Infusion of the  $A_2$  receptor antagonist DMPX into the renal medullary interstitial space markedly decreased blood flow in both the outer and inner medulla of the anesthetized rats. In contrast, infusion of the  $A_1$  receptor antagonist DPCPX had no effect on medullary blood flows. These results indicate that endogenous medullary adenosine contributes importantly to medullary vascular tone via  $A_2$  receptors. Conversely, elevations of medullary adenosine concentrations by administration of adenosine into medullary interstitial space increased medullary blood flow. These findings demonstrate that medullary adenosine exerts vasodilator effect under normal conditions and during states of elevated adenosine.

However, Sillardorf et al. (32) observed that adenosine at  $10^{-12}$ – $10^{-7}$  M produced vasoconstriction of isolated perfused outer medullary descending vasa recta, but by  $A_1$  receptor activation. In the present study, we did not observe  $A_1$  receptor-mediated vasoconstrictor effects on medullary vessels in the intact blood-perfused kidney, although the  $A_1$  receptor blocker DPCPX was infused into the renal medullary interstitial space at a dose sufficient to alter tubular function. Our data are consistent with previous reports suggesting that interstitial infusion of  $A_1$  receptor agonists had no effect on medullary blood flow and oxygenation (1). The effects of  $A_1$  receptor blockade or activation on medullary vessels in

vivo may be related to a high basal concentration of adenosine in the renal medullary interstitium, which could mask vasoconstrictor actions of  $A_1$  receptors by predominately stimulating  $A_2$  receptors. Indeed, a vasodilator effect with high concentration of adenosine ( $10^{-6}$ – $10^{-5}$  M) was also observed in the in vitro isolated and perfused vasa recta (32).

Recent studies in our laboratory and others showed that medullary blood flow plays an important role in the control of renal sodium and water excretion (13). It has been also reported that infusion of adenosine into the renal artery, at doses that did not activate systemic receptor sites, produced marked natriuresis and diuresis in rats (22, 37). The mechanism by which intrarenal adenosine produced natriuresis remains unknown. In the present study, we determined whether elevation of medullary adenosine contributed to the control of renal sodium and water excretion by increasing medullary blood flow. We found that renal medullary interstitial infusion of the selective  $A_2$  receptor antagonist that reduced medullary blood flow significantly decreased sodium and water excretion in anesthetized rats. These observations indicate that adenosine contributes to the normal maintenance of sodium and water excretion via  $A_2$  receptor stimulation under physiological conditions. In contrast, renal medullary infusion of specific  $A_1$  receptor blocker increased sodium and water excretion. Because  $A_1$  receptor blockade had no effect on medullary blood flow, we propose that this  $A_1$  receptor-mediated antinatriuretic and antidiuretic effect may be due to a direct effect on medullary tubular transport. Taken together, the results suggest that medullary adenosine could contribute importantly to the control of sodium and water excretion largely through the vascular effects.

Our findings are not consistent with conclusions reached by others with exogenously infused adenosine, which reduced chloride reabsorption in the loop of Henle and sodium reabsorption in the inner medullary collecting duct (4, 29). The reason for this discrepancy is not apparent, but it is possible that adenosine at physiological concentrations has direct stimulatory effects on tubular transport mediated by  $A_1$  receptors. A recent study by Ling et al. (18) using A6 distal nephron cells and patch-clamp technique supports this view. They found that adenosine at physiological concentrations (nanomolar range) increased the activity of amiloride-sensitive  $Na^+$  channels on the apical membrane, and increases in adenosine concentration to micromolar range inhibited the activity of these  $Na^+$  channels. The  $A_1$  receptor antagonist DPCPX blocked the stimulatory effect of low concentrations of adenosine on the  $Na^+$  channel activity, and the  $A_2$  receptor antagonist DMPX blocked the inhibitory effects of high concentrations of adenosine on the  $Na^+$  channel activity.

Recently, the molecular and pharmacological characteristics of a novel adenosine receptor subtype designated  $A_3$  were described (38). It was shown that activation of  $A_3$  receptors produced hypotension, mast cell degranulation, and vasoconstriction (17, 30).  $A_3$  receptor-mediated adenosine effects on renal medullary blood



flow and renal function have not been previously studied. In the present study, we found that renal medullary infusion of benzyl-NECA, a specific A<sub>3</sub> receptor agonist, had no effect on either medullary blood flow or sodium and water excretion, even at a dose that decreased arterial blood pressure when infused intravenously. Therefore, it appears that A<sub>3</sub> receptors do not participate in the control of medullary blood flow and sodium and water excretion.

In summary, the present data provide evidence that high concentrations of adenosine are present in the renal medullary interstitial dialysate. Endogenous adenosine dilates medullary vessels and increases medullary blood flow via A<sub>2</sub> receptors, resulting in a natriuretic response. This A<sub>2</sub> receptor-mediated effect of adenosine on renal medullary hemodynamics overrides A<sub>1</sub> receptor-mediated tubular antinatriuretic effects and hence plays an important role in the control of renal sodium and water excretion. A<sub>3</sub> receptors do not participate in the effect of adenosine on medullary circulation and sodium and water excretion.

### Perspectives

Our previous studies have demonstrated that medullary blood flow was poorly autoregulated and rise of renal perfusion pressure increases medullary blood flow, which provides a signal that transmits increases in arterial pressure to the tubules to enhance sodium and water excretion. It will be intriguing to determine whether a high concentration of medullary adenosine and its vasodilator effect shown in the present study contribute to the poor autoregulation of medullary blood flow and pressure natriuretic response. Moreover, because medullary blood flow participates in the long-term control of arterial blood pressure (9), adenosine as an endogenous vasodilator in the renal medullary circulation would be expected to be a medullary antihypertensive factor.

This study was supported by National Institutes of Health Grants HL-29587 and DK-52112 and a National Kidney Foundation Young Investigator grant.

Address for reprint requests and other correspondence: A.-P. Zou, Dept. of Physiology, Medical College of Wisconsin, 8701 Watertown Plank Road, Milwaukee, WI 53226 (E-mail azou@post.its.mcw.edu).

Received 25 August 1998; accepted in final form 4 December 1998.

### REFERENCES

1. Agmon, Y., D. Dinour, and M. Brezis. Disparate effects of adenosine A<sub>1</sub>- and A<sub>2</sub>-receptor agonists on intrarenal blood flow. *Am. J. Physiol.* 265 (*Renal Fluid Electrolyte Physiol.* 34): F802–F806, 1993.
2. Arend, L. J., W. S. Sonnenberg, W. L. Smith, and W. S. Spielman. A<sub>1</sub> and A<sub>2</sub> adenosine receptors in rabbit cortical collecting tubule cells. *J. Clin. Invest.* 79: 710–714, 1987.
3. Baranowski, R. L., and C. Westenfelder. Estimation of renal interstitial adenosine and purine metabolites by microdialysis. *Am. J. Physiol.* 267 (*Renal Fluid Electrolyte Physiol.* 36): F174–F182, 1994.
4. Beach, R. E., and D. W. Good. Effects of adenosine on ion transport in rat medullary thick ascending limb. *Am. J. Physiol.* 263 (*Renal Fluid Electrolyte Physiol.* 32): F482–F487, 1992.
5. Berne, R. M. Cardiac nucleotides in hypoxia: possible role in regulation of coronary blood flow. *Am. J. Physiol.* 204: 317–322, 1963.
6. Biaggioni, I., and R. Mosqueda-Garcia. Adenosine in cardiovascular homeostasis and the pharmacologic control of its activity. In: *Hypertension: Pathophysiology, Diagnosis, and Management* (2nd ed.) New York: Raven, 1995, p. 1125–1140.
7. Blanco, J., E. I. Canela, J. Mallol, C. Lluís, and R. Franco. Characterization of adenosine receptors in brush-border membrane from pig kidney. *Br. J. Pharmacol.* 7: 671–678, 1992.
8. Brezis, M., S. Rosen, and F. H. Epstein. The pathophysiological implications of medullary hypoxia. *Am. J. Kidney Dis.* 13: 253–258, 1989.
9. Cowley, A. W., Jr. Long-term control of arterial blood pressure. *Physiol. Rev.* 72: 231–300, 1992.
10. Dinour, D., and M. Brezis. Effects of adenosine on intrarenal oxygenation. *Am. J. Physiol.* 261 (*Renal Fluid Electrolyte Physiol.* 30): F787–F791, 1991.
11. Epstein, F. H. Oxygen and renal metabolism. *Kidney Int.* 51: 381–385, 1997.
12. Epstein, F. H., S. Rosen, G. Galicka-Piskorska, K. Spokes, M. Brezis, and P. Silva. Relation of adenosine to medullary injury in the perfused rat kidney. *Miner. Electrolyte Metab.* 16: 185–190, 1990.
13. Freissmuth, M., V. Hausleithner, E. Tuisel, C. Nanoff, and W. Schutz. Glomeruli and microvessels of the rabbit kidney contain both A<sub>1</sub>- and A<sub>2</sub>-adenosine receptors. *Naunyn-Schmiedeberg's Arch. Pharmacol.* 335: 438–444, 1987.
14. Haddy, F. J., and J. B. Scott. Metabolically linked vasoactive chemicals in local regulation of blood flow. *Physiol. Rev.* 48: 688–707, 1968.
15. Kreisberg, M. S., E. P. Sillardorf, and T. L. Pallone. Localization of adenosine-receptor subtype mRNA in rat outer medullary descending vasa recta by RT-PCR. *Am. J. Physiol.* 272 (*Heart Circ. Physiol.* 41): H1231–H1238, 1997.
16. Kriz, W., and B. Kaissling. Structural organization of the mammalian kidney. In: *The Kidney: Physiology and Pathophysiology* (2nd ed.), edited by D. W. Seldin and G. Giebisch. New York: Raven, 1992, p. 707–777.
17. Linden, J. Cloned adenosine A<sub>3</sub> receptors: pharmacological properties, species differences and receptor functions. *Trends Pharmacol. Sci.* 15: 298–306, 1994.
18. Ling, B. N., H. Ma, and D. C. Eaton. Luminal adenosine receptors regulate amiloride-sensitive Na<sup>+</sup> channels in A6 distal nephron cells. *Am. J. Physiol.* 270 (*Renal Fluid Electrolyte Physiol.* 39): F798–F805, 1996.
19. Lu, S.-H., R. J. Roman, D. L. Mattson, and A. W. Cowley, Jr. Renal medullary interstitial infusion of diltiazem alters sodium and water excretion in rats. *Am. J. Physiol.* 263 (*Regulatory Integrative Comp. Physiol.* 32): R1064–R1070, 1992.
20. Luebbbers, D. W., and H. Baumgaertel. Heterogeneities and profiles of oxygen pressure in brain and kidney as examples of the P<sub>O</sub><sub>2</sub> distribution in the living tissue. *Kidney Int.* 51: 372–380, 1997.
21. McCoy, D. E., B. Samita, B. A. Olson, D. G. Levier, L. J. Arend, and W. S. Spielman. The renal adenosine system: structure, function and regulation. *Semin. Nephrol.* 13: 31–40, 1993.
22. Miyamoto, M., Y. Yagil, T. Larson, C. Robertson, and R. L. Jamison. The effect of intrarenal adenosine on renal excretory function and medullary blood flow in the rat. *Am. J. Physiol.* 255 (*Renal Fluid Electrolyte Physiol.* 24): F1230–F1234, 1988.
23. Nehlig, A., J. L. Daval, and S. Boyet. Effects of selective adenosine A<sub>1</sub> and A<sub>2</sub> receptor agonists and antagonists on local rates of energy metabolism in the rat brain. *Eur. J. Pharmacol.* 258: 57–66, 1994.
24. Nithipatikom, K., T. Mizumura, and G. J. Gross. Determination of plasma adenosine by high-performance liquid chromatography with column switching and fluorometric detection. *Anal. Biochem.* 223: 280–284, 1994.
25. Olah, M., and G. L. Stile. Adenosine receptor subtypes: characterization and therapeutic regulation. *Annu. Rev. Pharmacol. Toxicol.* 35: 581–605, 1995.
26. Pawlowska, D. J., J. P. Granger, and F. G. Knox. Effects of adenosine infusion into renal interstitium on renal hemodynam-

- ics. *Am. J. Physiol.* 252 (*Renal Fluid Electrolyte Physiol.* 21): F678–F682, 1987.
27. **Pflüger, A. C., T. J. Berndt, and F. G. Knox.** Effect of renal interstitial adenosine infusion on phosphate excretion in diabetes mellitus rats. *Am. J. Physiol.* 274 (*Regulatory Integrative Comp. Physiol.* 43): R1228–R1235, 1998.
  28. **Sawyanok, J., M. R. Zarrindast, A. R. Reid, and G. J. Doak.** Adenosine A3 receptor activation produces nociceptive behaviour and edema by release of histamine and 5-hydroxytryptamine. *Eur. J. Pharmacol.* 333: 1–7, 1997.
  29. **Seney, F. D., Jr., and M. G. Seikaly.** Adenosine inhibits sodium uptake in the loop of Henle (Abstract). *Clin. Res.* 37: 501A, 1989.
  30. **Shepherd, R. K., J. Linden, and B. R. Duling.** Adenosine-induced vasoconstriction in vivo. Role of the mast cell and A<sub>3</sub> adenosine receptor. *Circ. Res.* 78: 627–634, 1996.
  31. **Siddiqi, S. M., R. A. Pearlstein, L. H. Sanders, and K. A. Jacobson.** Comparative molecular field analysis of selective A3 adenosine receptor agonist. *Bioorg. Med. Chem.* 3: 1331–1343, 1995.
  32. **Silldorf, E. P., M. S. Kreisberg, and T. L. Pallone.** Adenosine modulates vasomotor tone in outer medullary descending vasa recta of the rat. *J. Clin. Invest.* 98: 18–23, 1996.
  33. **Siragy, H. M., and J. Linden.** Sodium intake markedly alters renal interstitial fluid adenosine. *Hypertension* 27: 404–407, 1996.
  34. **Spielman, W. S., and L. J. Arend.** Adenosine receptors and signaling in the kidney. *Hypertension* 17: 117–130, 1991.
  35. **Weaver, D. R., and S. M. Repper.** Adenosine receptor gene expression in the rat kidney. *Am. J. Physiol.* 263 (*Renal Fluid Electrolyte Physiol.* 32): F991–F995, 1992.
  36. **Woodcock, E. A., E. Leung, and C. I. Johnston.** Adenosine receptors in papilla of human kidneys. *Clin. Sci. (Colch.)* 70: 353–357, 1986.
  37. **Yagil, Y.** The effect of adenosine on water and sodium excretion. *J. Pharmacol. Exp. Ther.* 268: 826–835, 1994.
  38. **Zhou, Q. Y., C. Li, M. E. Olah, R. A. Johnson, G. L. Stiles, and O. Civelli.** Molecular cloning and characterization of adenosine receptor: the A3 adenosine receptor. *Proc. Natl. Acad. Sci. USA* 89: 7432–7436, 1992.

